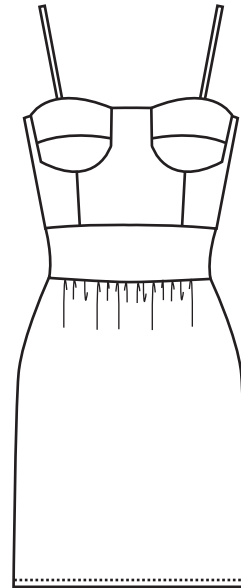


# HOUSE OF SOCIAL GRACE

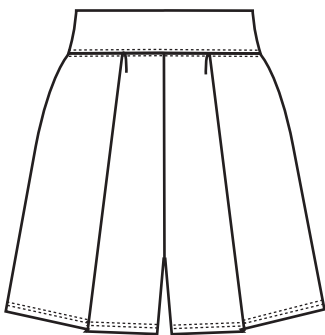
## FALL WINTER 2009



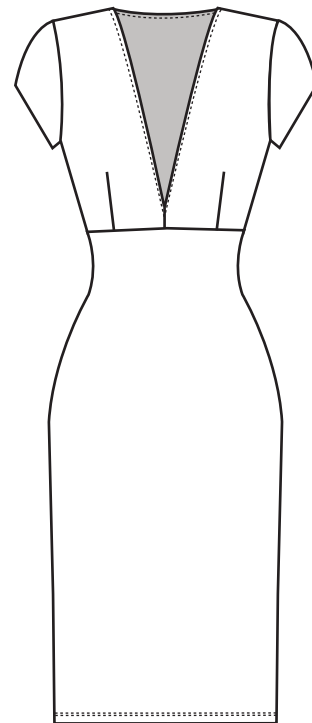
FW0910  
ICE MAIDEN COAT  
BLACK, CHARCOAL, IVORY OR BLUE  
\$125.00



FW0911  
PHILOSOPHER'S DRESS  
SILVER OR GOLD  
\$55.00



FW0912  
WINDMILL SHORTS  
CHARCOAL, IVORY OR BLACK  
\$35.00



FW0913  
CHURCHBELL DRESS  
BLACK OR IVORY  
\$50.00